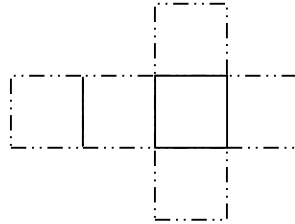


Attachment B: Learning Cube for Greek Gods and Goddesses

1. Divide a piece of poster paper into 6 equal squares that, when cut and glued, will form a cube. The division of the poster paper should look like the following drawing:



2. Draw or write in each square one fact or scene depicting an aspect of a Greek god or goddess. Include a reference to the god or goddess in present day culture, architecture, or politics if such a reference exists. Use the resources provided by your teacher to research the various Greek gods and goddesses.
3. Cut along the dotted lines indicated in the drawing and fold along solid lines to create a cube. Tape the cube together.