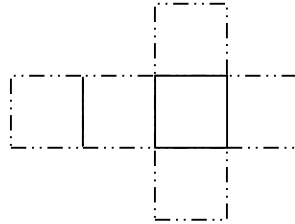


Attachment B: Learning Cube for the Christian Religion

1. Divide a piece of poster paper into 6 equal squares that, when cut and glued, will form a cube. The division of the poster paper should look like the following drawing:



2. Draw or write in each square one fact about Christianity. Use the resources provided by your teacher to research the Christian religion.
3. Cut along the dotted lines indicated in the drawing, and fold along solid lines to create a cube. Tape the cube together.
4. The following information should be reflected on the cube:
 - Beliefs, traditions, and customs of Christianity
 - Monotheism
 - Jesus as both Son and incarnation of God
 - Life after death
 - New Testament, containing accounts of the life and teachings of Jesus, as well as the writings of early Christians
 - Christian doctrine established by early church councils